

Reduce, Reuse, Recycle (#RPP)

Welcome to Hughes! As you know, being an Aggie comes with many expectations, including being good stewards of the environment. Recycling in your residence hall provides a great opportunity to do that. Residence Life wants every Aggie in Hughes Hall to leave educated about sustainability and with lifelong recycling habits established.

Why is it important?

Aggies have a unique opportunity to significantly impact the environment. In March 2016 alone, TAMU recycled 119.36 tons of compostable material. That's 119.36 tons diverted from the landfill and that TAMU did not need to transport thirty miles each way to the landfill, preventing the trucks from polluting with additional carbon emissions. Together we create enormous impacts but every student's participation matters in this effort.

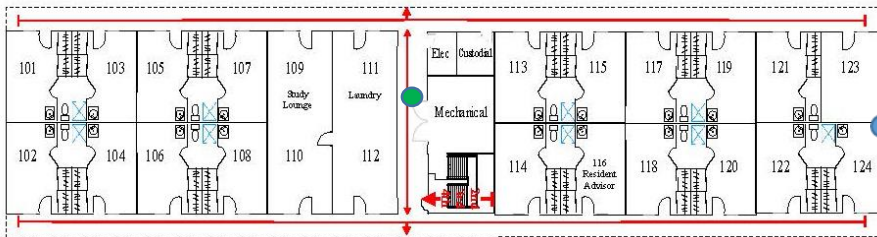
The Process



Place your recyclable items in the bins marked with the universal stickers (displayed to the left). These stickers should be placed on the bins by the end of 2016. Your hall custodians will take the material from your hall containers to the green dumpsters from Brazos Valley Recycling (BVR) in your area.

Start a tradition of recycling in Hughes Hall

(● = 1st floor, ● = 2nd floor, ● = 3rd floor)



1) Please locate the recycling bins in Hughes Hall.

2) Encourage residents to place cans, plastic bottles and paper in these recycling bins.

3) Your custodial staff then will take the recycled material to a green dumpster from Brazos Valley Recycling (displayed to the right).

- and/or encourage students to place their recyclable material directly into the “green worm” dumpster in the parking lot bedside Haas and Sbisá Dining Hall. Students can take their paper, cardboard, and plastics directly to these larger dumpsters.



4) Create a system for removing recyclable material with your hall council if your residents believe it necessary. Contact us at sustainability@housing.tamu.edu to devise a system for doing so in your specific hall.

If you have questions or concerns, contact us at sustainability@housing.tamu.edu or use the hashtag #ResLifeSustainability on social media. Also, feel free to nominate your hall custodians for the “Clutch Custodian” recognition if you believe their efforts exceed expectations for recycling by emailing us at the address above.